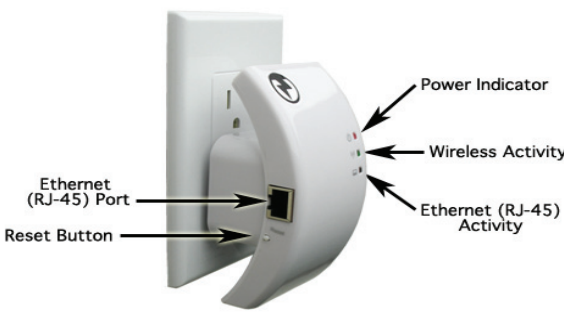


# MacRepeater™

WiFi Range Expander

## Installation Guide



The MacRepeater is a simple and versatile device. It accepts a network signal and repeats it, expanding the size of your wireless 802.11 b/g/n network. Many devices can connect to it wirelessly and one device can connect through its ethernet RJ-45 port.



**MACWIZARDS**  
a division of CORVAD inc

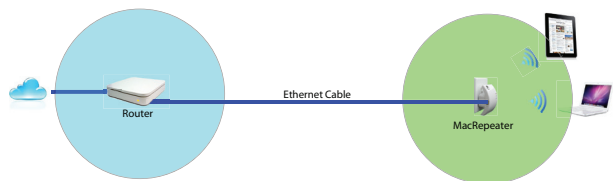
1-800-960-MWIZ (6949)  
www.macwizards.com



### A. TWO MODES OF OPERATION

**Wireless Repeater Mode:** Most people will use the MacRepeater by placing it at the edge of their wireless network. The MacRepeater will act as a relay allowing your Mac OS, iOS, PC or other 802.11 b/g/n wireless device to connect to the wireless network from a greater range. In this mode, the ethernet port on the MacRepeater can also be used to connect a device that doesn't have it's own wireless capability to your wireless network. Because it connects through the ethernet port, no drivers or extensions are needed on the device, making it possible to connect up older devices that might not otherwise be able to access your wireless network.

**Access Point (AP) Only Mode:** You can also install the MacRepeater far outside your wireless network by running an ethernet cable between it and your router. This means you can create a new WiFi zone in your office or home outside your normal WiFi range. The new zone will allow your wireless devices to access all your normal network services as if they were within your existing wireless network. To do this, you will put the MacRepeater's wireless interface in AP only mode.



Selecting the wireless operation mode is part of the installation process. Changing modes requires reinstallation of the MacRepeater. Before installing, decide which wireless mode you wish to use.

### B. RESETTING TO DEFAULTS

If you need to reset the MacRepeater to factory defaults, hold down the reset button (beside the ethernet RJ-45 port) for 10 seconds while plugged in. The MacRepeater will then reboot with its default settings. Rebooting takes 10-30 additional seconds.

By default, the MacRepeater is in AP only mode, the IP number is 192.168.10.1, the administrator login (or "User Name") is "admin" and the password is "admin".

### C. BEST PLACEMENT

The MacRepeater can be installed in any electrical outlet. It is equipped with an international power supply and ships with a removable U.S. 2-pin plug. The plug installs by gently pushing it into the round socket and rotating the pin clockwise until you hear a soft click. To remove, firmly press the tab before turning the pin

counterclockwise and pulling. The plug can be installed vertically or horizontally to accommodate socket availability or to change the orientation of the built-in antenna.

Metal or thick concrete will reduce signal strength. To maintain the best signal, place the MacRepeater halfway between the wireless device you are attempting to add to your network and your wireless router. Avoid having large metal objects or interference-producing devices (example: microwave ovens) in a direct line between either the router and the MacRepeater, or between the MacRepeater and the computer.

### D. BEFORE YOU BEGIN

- Decide if you are setting up the MacRepeater in repeater mode or AP only mode.
- If your network has wireless access now, you will need information about how to connect wirelessly to your network. The MacRepeater may be able to help you determine the security method (open, WEP, or WPA/WPA2) and encryption cipher (TKIP or AES).
- If your network has a password, then it will also be needed.

### E. SETTING UP THE MACREPEATER

The MacRepeater has a built-in setup wizard and control panel. Both can be used through a web browser. No other software or drivers are needed.

To setup your MacRepeater, temporarily create a private connection between your computer and the MacRepeater, then run either the Repeater mode setup wizard or the AP mode setup wizard. Afterwards, be sure to switch your computer back to its normal network connection.

**Step 1 - Connection:** You can connect your computer to the MacRepeater wirelessly or with the included ethernet cable. We recommend using the wireless connection.

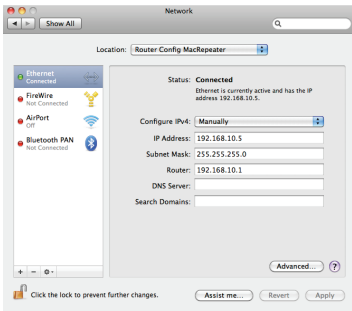


To establish a wireless connection (Recommended): Click on your computer's wireless network icon and select the MacRepeater default wireless network. It will be named either "MacRepeater" or "WiFi-Repeater". By default, no password will be required.

The wireless network icon will be located at the top right of your Mac OS computer's menu bar or the bottom right of your PC's menu bar. You can also select a new wireless connection through the "Network" panel in the Mac OS "System Preferences".

To establish a wired connection: Connect the RJ-45 port in the MacRepeater to the one in your computer using the included

ethernet cable. Doing so will require temporarily changing your computer's IP address to 192.168.10.x (x can be any number 2 through 255) and changing its router IP address to 192.168.10.1 with a subnet mask of 255.255.255.0. The best way to do this is by setting up a new "Location" and inputting these values by choosing to configure them "Manually".



Once the private connection is established, open a web browser and connect to the URL http://192.168.10.1 -- this is the MacRepeater's default IP. The MacRepeater will prompt you for an administration login and password to open the built-in setup wizard and control panel.

**Step 2 - Administration Login:** By default, the administrator's user name is "admin" and the password is "admin". For security, you are encouraged to change the administration login and password on the MacRepeater.

**IMPORTANT:** The administrative login and password are used only for programming the MacRepeater. This is separate from any login and password the MacRepeater or your network might use to protect access to your network.

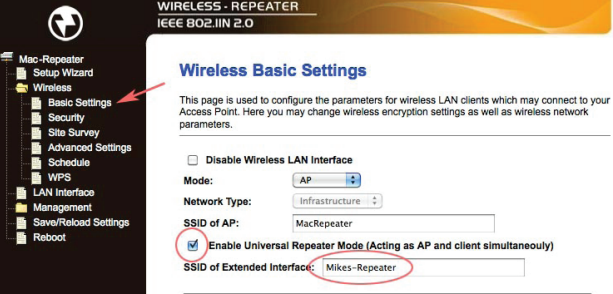
**Step 3 (Optional) - Changing Admin Password:** This step is not required. To do this, click on the "Password" item in the left hand menu. You may need to expand the "Management" sub-menu to do this.



Enter your new user name and password. Record this information in a safe place. (Passwords are case sensitive. If you forget the login or password, you will need to reset the MacRepeater to change it. See "Resetting to Defaults" above.) When you click the "Apply Changes" button, the MacRepeater will disconnect and restart. Repeat Steps 1 and 2 with your new login and password to continue.

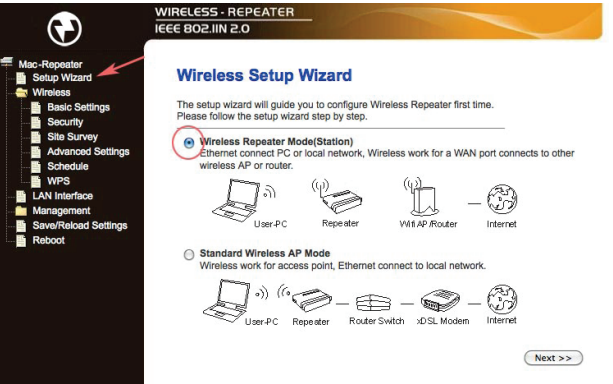
**Step 4 - Repeater Mode Setup:** The following steps will setup the MacRepeater in Wireless Repeater mode. (See "Modes of Operation" above.) If you need to install the MacRepeater in AP only mode, skip all parts of Step 4 and start with Step 5.

**Step 4a (Optional) - Renaming Repeater SSID:** This step is not required. You may change the name (SSID) of your MacRepeater so users can easily recognize it when connecting to your network. To change the MacRepeater's SSID, click on the "Basic Settings" item in the left hand menu. You may need to expand the "Wireless" sub-menu to do this.



Check the "Enable Universal Repeater Mode" checkbox. In the "SSID of Extended Interface" dialog box, type the SSID you want users to see. Click the "Apply Changes" button at the bottom of the page and the "Reboot Later" option when the confirmation dialog comes up.

**Step 4b - Repeater Mode Wizard:** Click on the "Setup Wizard" in the left menu, select the "Wireless Repeater Mode" radio button, and click "Next".



**Step 4c - Choose Your Network:** You should now see a list of wireless networks. Click on the radio button to the right of your network. Take note of the Encryption and Authentication methods of your network listed in the column titled "Encrypt" (WPA/WPA2 in the example below). Click "Next."



**Step 4d - Confirm and Reboot:** On the last page, confirm the MacRepeater has selected the correct encryption mode for your

network (WPA2, WPA, WEP, or none) and enter any password your network requires. (Passwords are case sensitive.) The most common configuration is shown below. Click "Apply and Reboot". You will lose your connection to the MacRepeater, then it will restart in 10-30 seconds.



After the MacRepeater has restarted, users will connect via the named wireless connection (SSID) you chose in Step 4a. (See "Using the MacRepeater" below.) Use the same password your network already requires, if your network requires one. All connections to the MacRepeater via wireless or the included RJ-45 port will be relayed to your network. If you wish to reprogram your MacRepeater, you will need to reset it to factory defaults and repeat this process. (See "Resetting to Defaults" above.)

**Step 5 - AP Only Mode Setup:** The following steps will setup the MacRepeater's wireless mode as AP only mode. (See "Two Modes of Operation" above.) If you chose to setup your MacRepeater in Repeater mode, skip all parts of Step 5.

**Step 5a (Optional) - Renaming AP SSID:** This step is not required. You may change the name (SSID) of your MacRepeater so users can easily recognize it when connecting to your network. To change the MacRepeater's SSID, click on the "Basic Settings" item in the left hand menu. You may need to expand the "Wireless" sub-menu to do this.



Type the SSID you want users to see into the "SSID of AP" dialog box. Click "Apply Changes" button at the bottom of the page and the "Reboot Later" option when the confirmation dialog comes up.

**Step 5b (Optional) - Securing AP Connection:** This step is not required. For security, you are encouraged to secure wireless access to your network through the MacRepeater AP. To secure your network, click on the "Security" item in the left hand menu. You may need to expand the "Wireless" sub-menu to do this.

The pop-up "Encryption" menu will offer you five choices. By default, encryption is disabled. If your network has another wireless

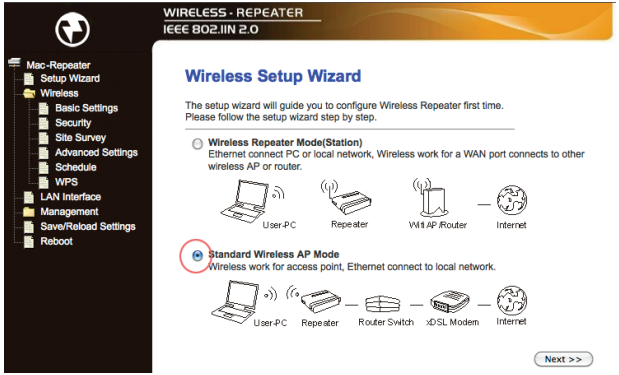
access point (for example, a built-in AP in a wireless router), it is recommended you use the same settings and password for your MacRepeater AP.



If you have no other wireless APs on your network, it is recommended you choose "WPA-Mixed" from the Encryption menu. This option will offer you the best balance between strong security and wide compatibility with different types of wireless devices. Unless you have specific reason to choose otherwise, it is recommended you use a Personal Pre-Shared Key with AES ciphers. The format "Passphrase" will allow you to use a memorable key that is often sufficiently complex to prevent unauthorized use of your network. In constructing your key, use a short phrase that includes letters and numbers (omitting spaces). (For example: "surfNisGr8fun"; passwords are case sensitive.)

Click the "Apply Changes" button at the bottom of the page and the "Reboot Later" option when the confirmation dialog comes up.

**Step 5c - AP Only Mode Wizard:** Click on the "Setup Wizard" in the left menu, select the "Standard Wireless AP Mode" radio button, and click "Next". On the next page, click "AP - OneKey Setting". You will lose your connection to the MacRepeater, then it will restart in 10-30 seconds.

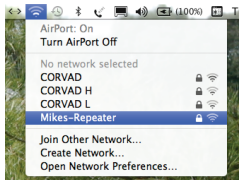


After the MacRepeater has restarted, users will connect via the named wireless connection (SSID) you chose in Step 5a. (See "Using the MacRepeater" below.) If you chose to secure the connection, users may be prompted for the password you chose in Step 5b. All connections to the MacRepeater via wireless or the included RJ-45 port will be relayed to your network. If you wish

to reprogram your MacRepeater, you will need to reset it to factory defaults and repeat this process. (See "Resetting to Defaults" above.)

## F. USING THE MACREPEATER

Once the MacRepeater is installed, you can connect to your network by selecting the wireless repeater or access point. Unless you renamed it in Step 4a or 5a (above), it will be named "MacRepeater" or "WiFi-Repeater". Click on the wireless network icon to choose the MacRepeater from a list of available WiFi connections near your computer.



The wireless network icon will be located at the top right of your Mac OS computer's menu bar or the bottom right of your PC's menu bar. You can also select a new wireless connection through the "Network" panel in the Mac OS "System Preferences".

If your network is secured by encryption, you will be prompted for your networks



password. After entering your password, close the dialog and open a web browser to confirm your network connection.

## G. TECH SUPPORT

The latest version of this manual and other information is available at [www.macrepeater.com](http://www.macrepeater.com). You can also call MacWizards tech support at 1-800-960-6949, weekdays, 8:30 a.m. to 4:30 p.m. Pacific Time.

This product and other fine products for your computer, iPad, iPhone, iPod or Apple TV are available at [www.macwizards.com](http://www.macwizards.com).

